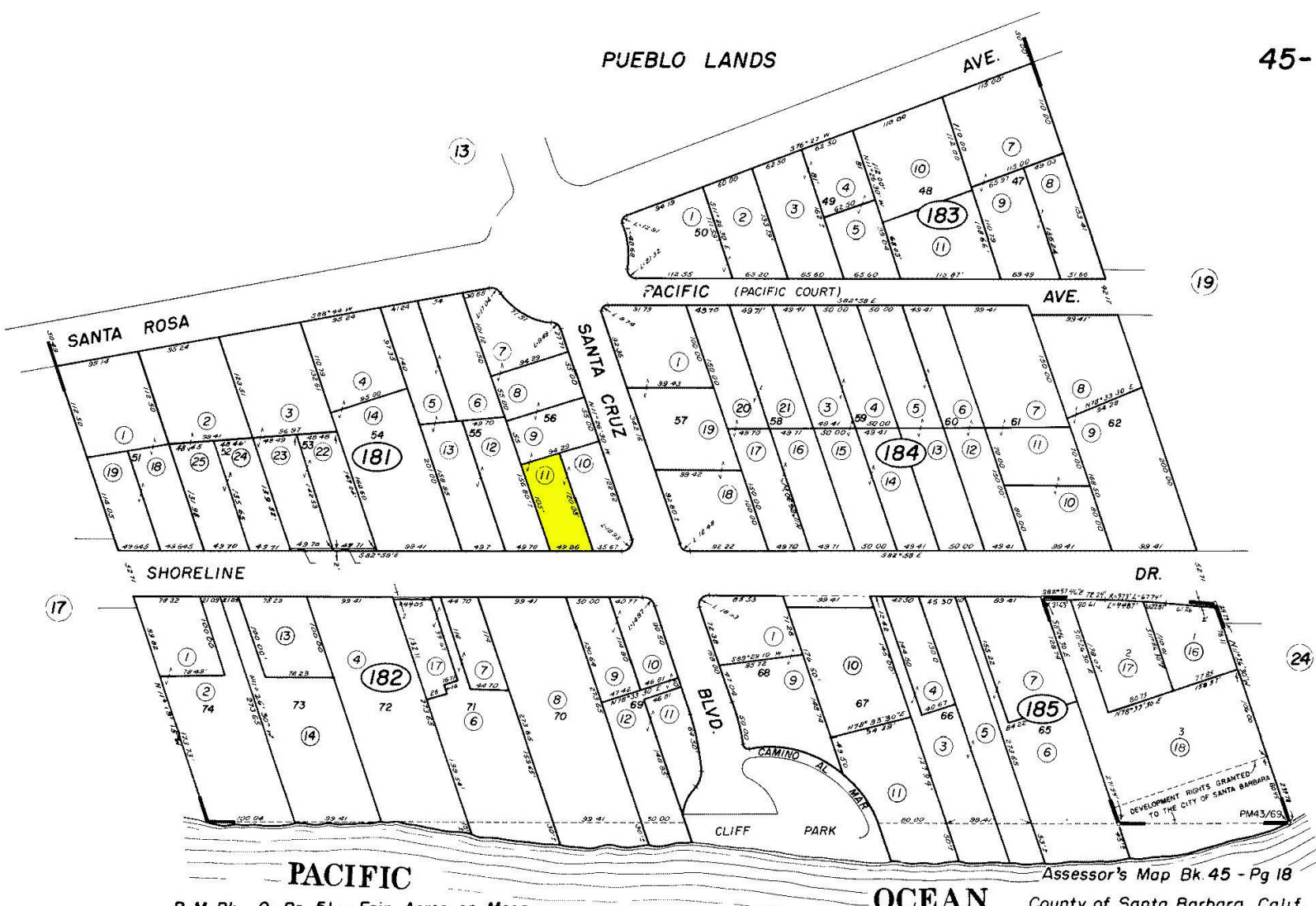


# PUEBLO LANDS

45-18



R. M. Bk. 9, Pg. 51 - Fair Acres on Mesa

NOTE: RECORD TITLE ALONG SHORE OF PACIFIC OCEAN SHALL BE CONSTRUED TO REACH MEAN HIGH WATER. BOARD OF SUPERVISORS MINUTES 9/8/30, BK 3, PG. 390

NOTE - Assessor's Block Numbers Shown in Ellipses Assessor's Parcel Numbers Shown in Circles

OCEAN

Assessor's Map Bk. 45 - Pg 18  
County of Santa Barbara. Calif.

This map/plat is being furnished as an aid in locating the herein described Land in relation to adjoining streets, natural boundaries and other land, and is not a survey of the land depicted. Except to the extent a policy of title insurance is expressly modified by endorsement, if any, the Company does not insure dimensions, distances, location of easements, acreage or other matters shown thereon.