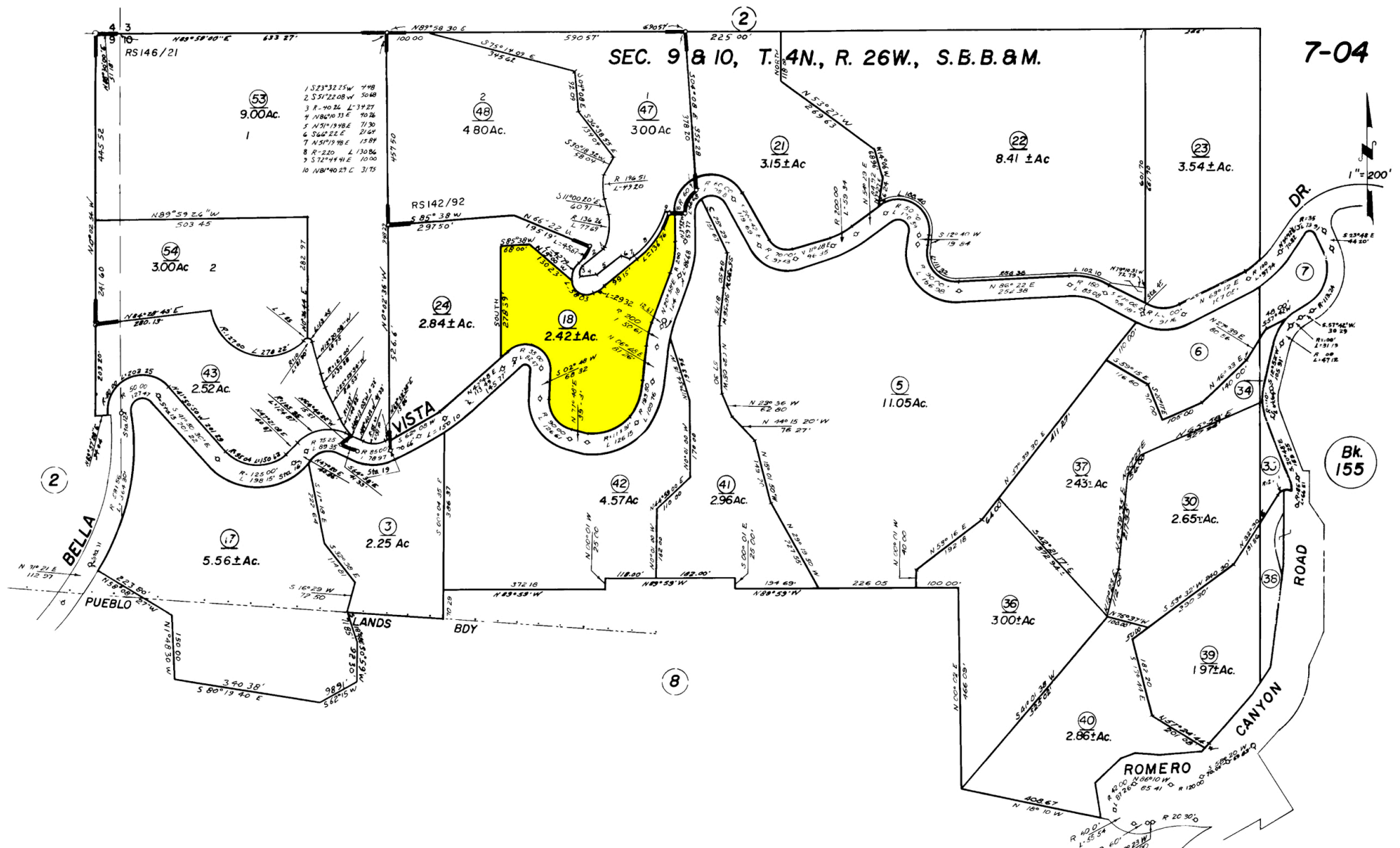


SEC. 9 & 10, T. 4N., R. 26W., S.B.B.&M.

7-04



Assessor's Map Bk. 7 - Pg. 04
 County of Santa Barbara, Calif.

NOTE - Assessor's Block Numbers Shown in Ellipses
 Assessor's Parcel Numbers Shown in Circles

08/94 44445 INTO 54453